

CALDERFLOWER

CAPABILITY



“Calderflower are very good architects. They understand that their role extends far beyond producing architectural plans. They know that to achieve good efficient and effective design that responds to the clients brief, involves clear and regular communication. Calderflower are prepared to go above and beyond to ensure the project is a success.”

Steve Ball | Property Development Director, BaptistCare
August 2020

Contents

About Calderflower	4
Expertise	8
Advisory	14
Sustainability	16
Masterplanning	20
Architecture	24
Interior Design	26
Team	28
Projects	34
Awards	62



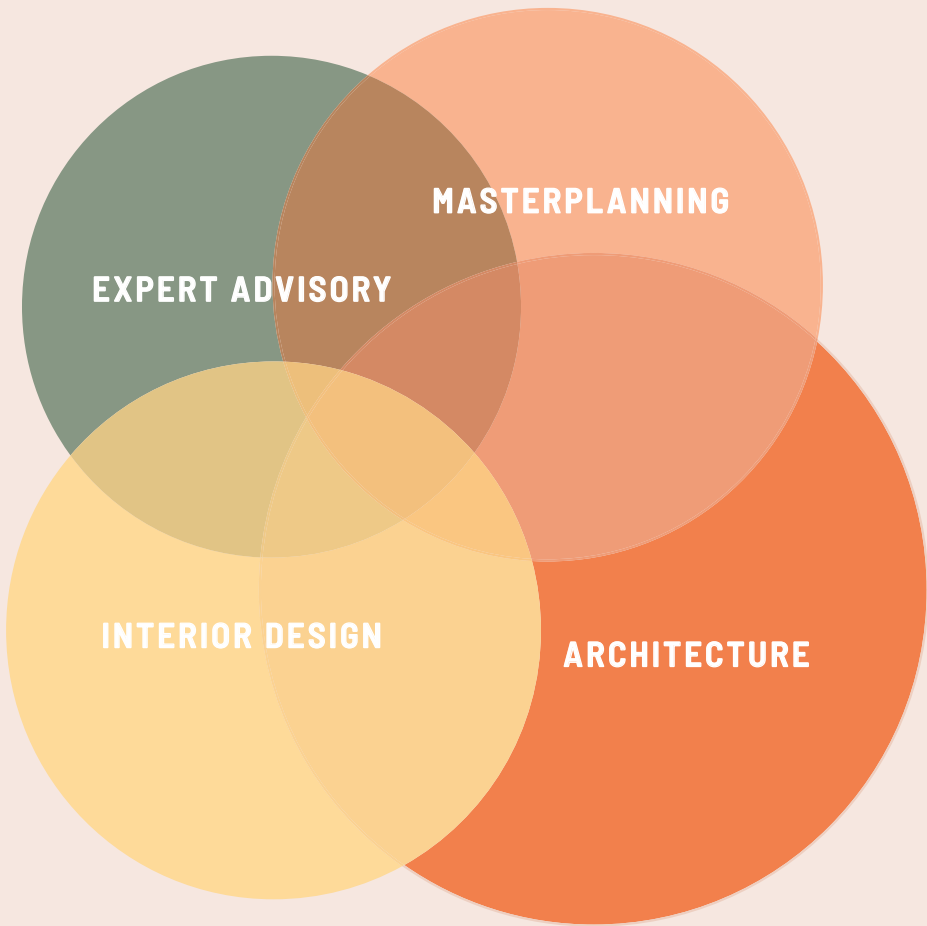
Calderflower are committed to making excellent design available to all communities.

Specialising in;

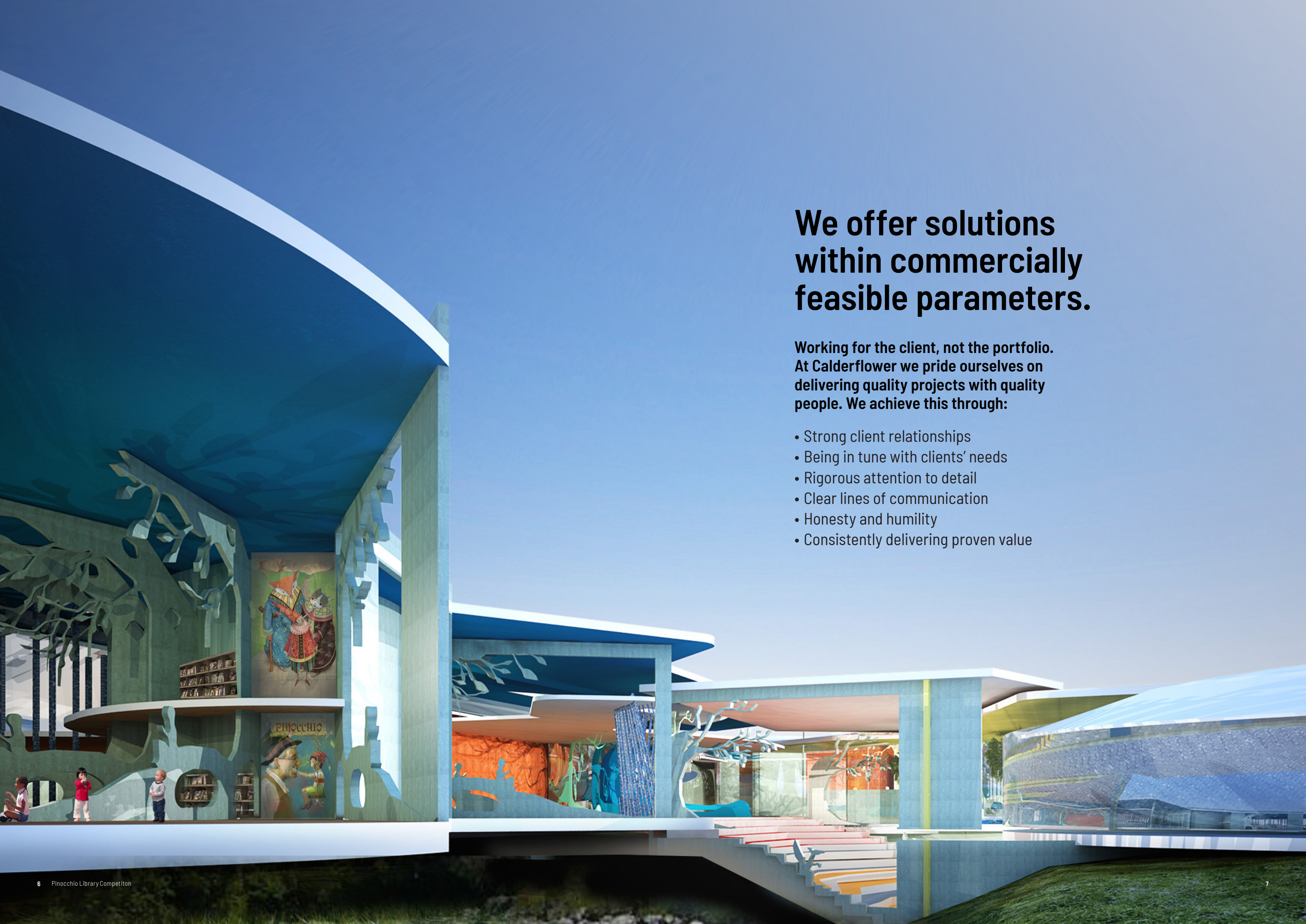
- Care accommodation
- Disability Housing
- Dementia/ Memory support housing
- Residential care
- Assisted living units
- Design for ageing in place
- Care hubs
- Independent living unit
- Affordable and social housing
- Community buildings
- Allied health and wellness hubs
- Site masterplanning
- Single residential houses

The practice has been actively engaged across the retirement living, seniors housing, care accommodation as well as social and disability housing sectors.

Calderflower continues to strive for innovation, creativity and commercially feasible solutions.



Calderflower is a vibrant and progressive practice, continually striving to remain one of Australia's premier providers of design excellence and innovation in retirement living, residential care and community projects. Through our ability to develop and deliver innovative outcomes, we have built long-term relationships with clients and consultants based around trust, collaboration and proven delivery.



We offer solutions within commercially feasible parameters.

Working for the client, not the portfolio. At Calderflower we pride ourselves on delivering quality projects with quality people. We achieve this through:

- Strong client relationships
- Being in tune with clients' needs
- Rigorous attention to detail
- Clear lines of communication
- Honesty and humility
- Consistently delivering proven value

Calderflower are proactive in undertaking ongoing research to support and understand the changing needs and market expectations of our clients and their end users. We offer solutions for positive change and improved operational performance.

Calderflower Architecture and Interiors is continuing to build on its reputation as a contemporary leader in this competitive market. This practice has been influential in establishing industry benchmarks through undertaking key projects which have been well recognised by the Care and Retirement sectors.

Whilst these projects have given the practice a reputation for being design leaders in this sector, it is our clients with whom we have worked over the years who have inspired and facilitated these opportunities. We place enormous value on their support and the relationships we have built with clients who underpin our business.

Design Consultancy services

- State planning legislation advisory (NSW SEPP Housing 2021)
- Guideline development
- Floorplan Optimisation
- Staff efficiency planning
- Registered Design Building Practitioner (DBP Act)
- Care model development
- Compliance analysis
- Build cost optimisation
- Performance and planning analysis on existing buildings/ assets
- Future proofing of care accommodation
- Brief development
- Site yield analysis and projection feasibility option
- Peer review

Architecture

- Concept development
- Schematic design
- Development applications
- Design Development
- Contract documentation
- Services during construction

Interior Design

- Concept design
- Design development
- Interior documentation
- FF&E Scheduling
- Wayfinding
- Selection of artworks and signage



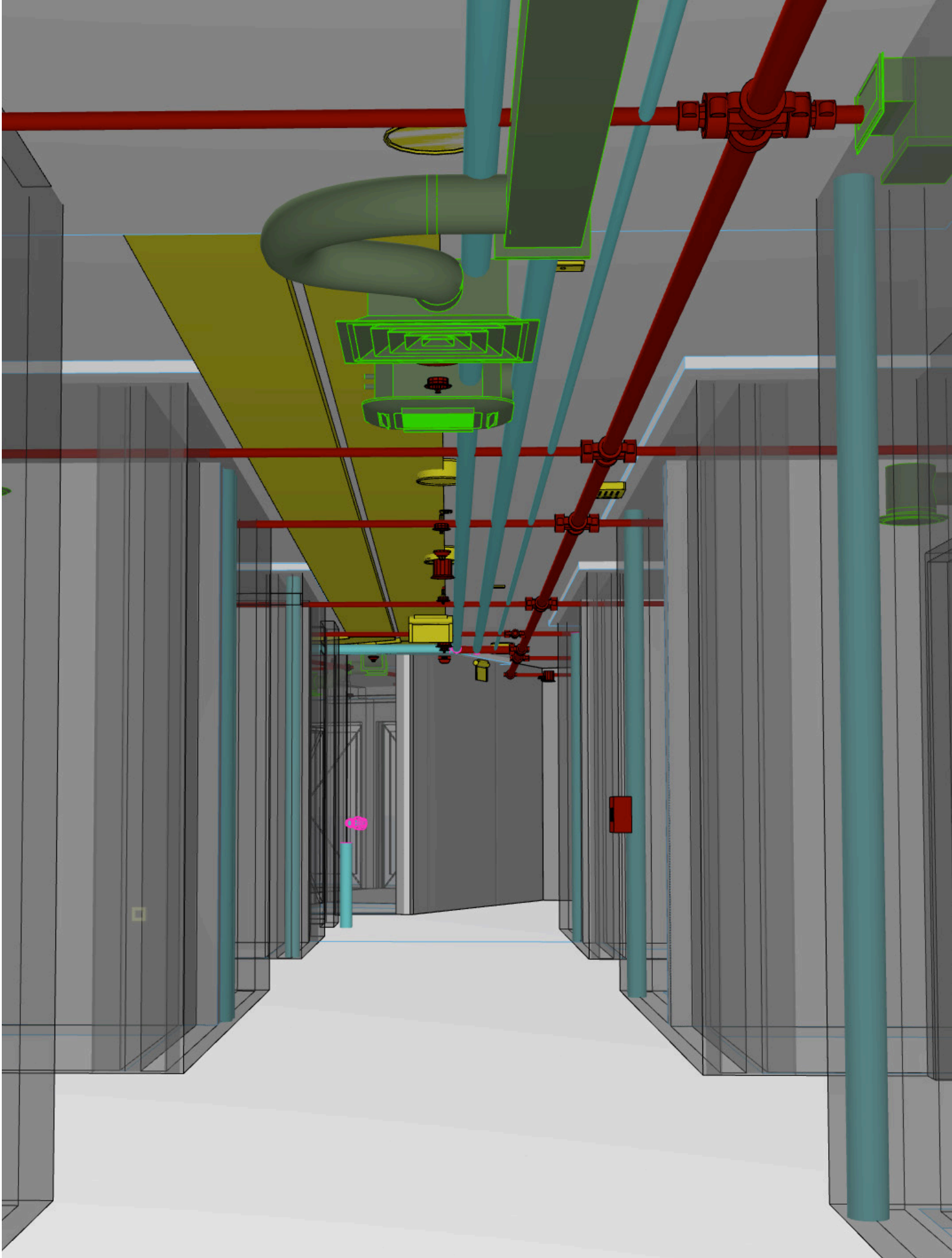
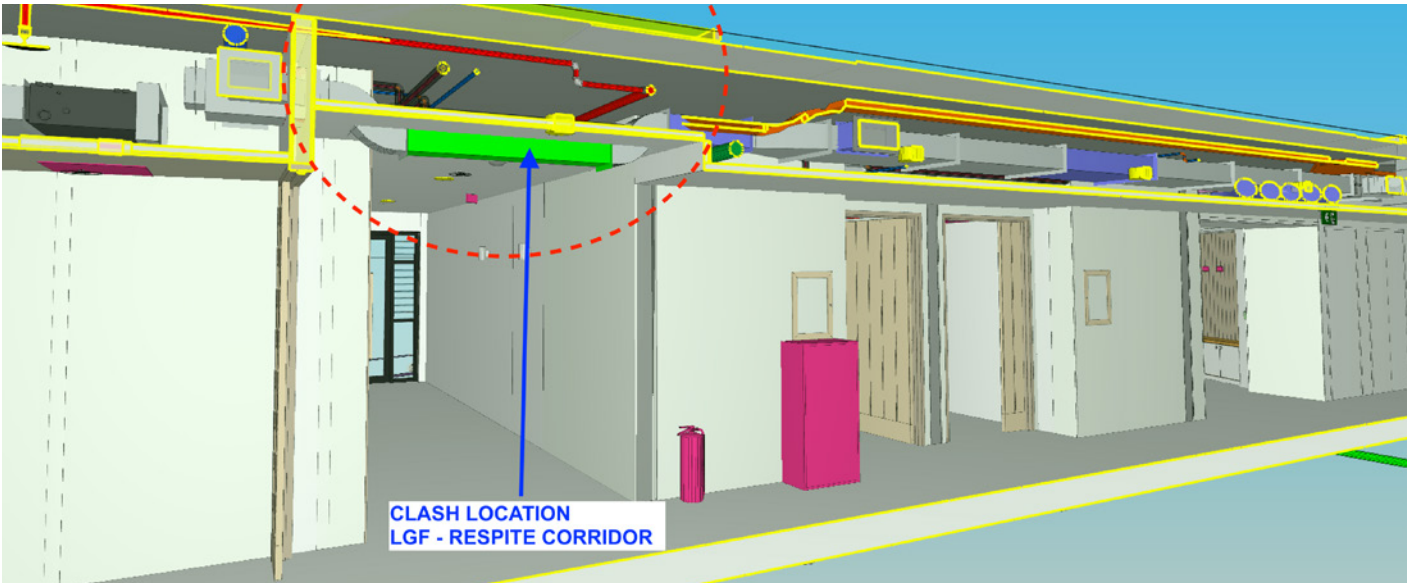
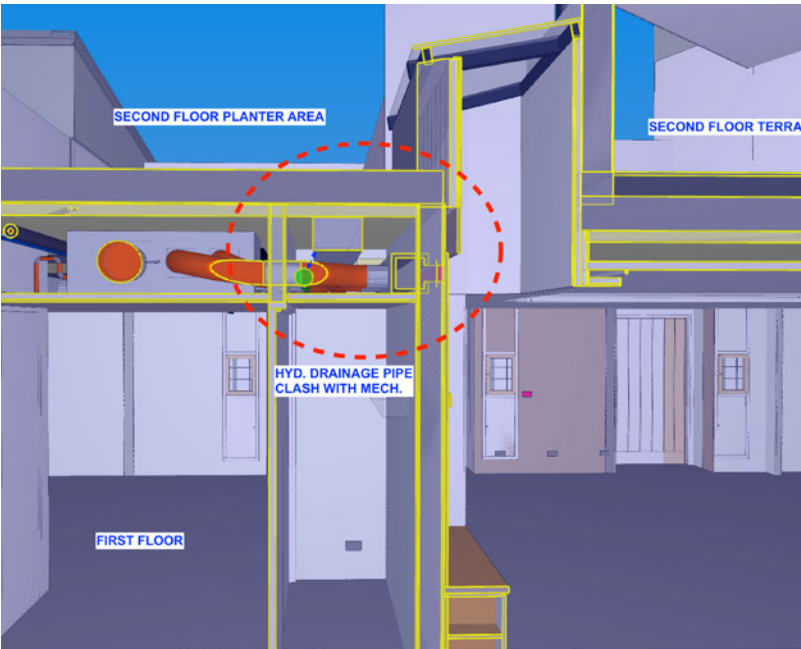
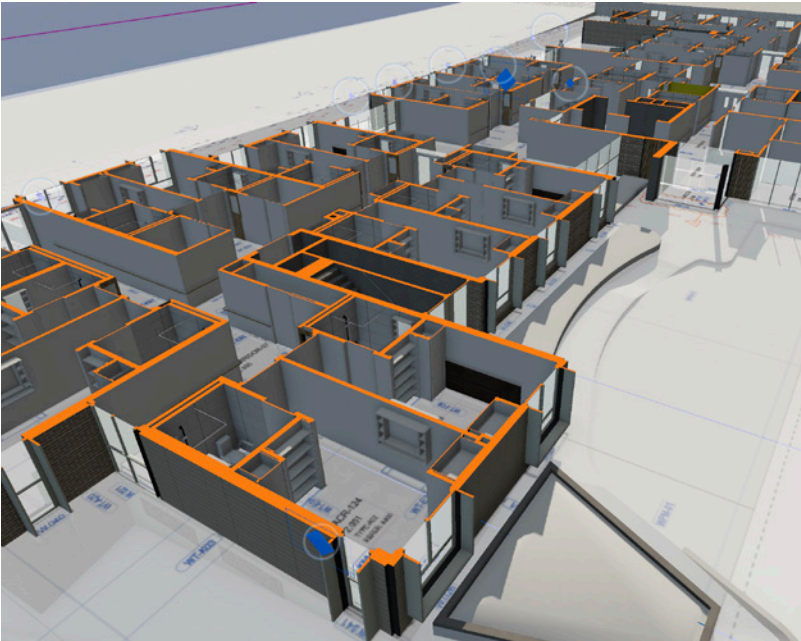
Building Information Modelling (BIM)

Calderflower design and document in 3-D, and continually endeavour to partner with consultants that have similar capability.

Calderflower use Archicad which provides a seamless interface between the 3-D model and traditional drawings (2-D format).

Using International Foundation Class (.ifc) file format facilitates exchange of 3-D documentation within the design team regardless of whether other disciplines are using alternative platforms (eg Revit, Sketch-Up etc).

This allows for the federation of various design disciplines (Architectural, Mechanical, Hydraulic, Structural etc) into a common model producing a live 3-D design/documentation tool, to resolve and co-ordinate spatial and aesthetic issues during developed design and construction documentation.



Calderflower aim to deliver refreshingly alternative built solutions that create a point of difference, to meet discerning needs for today and into the future.



Calderflower create unique and sought-after environments that seamlessly integrate with the architecture and continue the overall design through finely resolved interiors.



Design Guidelines

Guidelines for planning and design of Seniors Housing, to support the SEPP (Housing) 2021 NSW for the NSW Department of Planning (DPE)

Calderflower were commissioned by the state government to provide the Seniors Housing Design Guidelines to support the new SEPP (Housing) 2021.

The 90+ page document provides an overview of seniors' housing, building types and configurations plus six guiding principles for design:

- Care for planet
- Site-analysis environmental response
- Site-analysis urban response
- Care, wellbeing and community
- Design for physical ageing and dementia
- Design principles

NSW DPE looked to Calderflower's extensive experience and respected position as thought-leaders across the seniors housing industry, to create forward-looking guidelines that highlight the difference between seniors housing and standard apartment design. The Guide highlights that seniors housing is different from other housing types because it needs to meet the specific needs of community and social connection.



Guidance Chapters

When it comes to designing housing solutions for seniors, guidance is provided in the following 6 chapters;

CHAPTER 01
Care for the planet

CHAPTER 02
Site analysis - environmental response

CHAPTER 03
Site analysis - urban response

CHAPTER 04
Care, wellbeing and community

CHAPTER 05
Design for physical ageing and dementia

CHAPTER 06
Design principles

SENIORS HOUSING DESIGN GUIDE

CHAPTER 05 Design for physical ageing and dementia Continued

5.3 | DESIGN FOR DEMENTIA CONTINUED

In this example the back of house services area connects two households with service driveway access.

- 1 Verandah
- 2 Service driveway to shared service core
- 3 Front entry door
- 4 Pedestrian access to front door entrances

Small Households

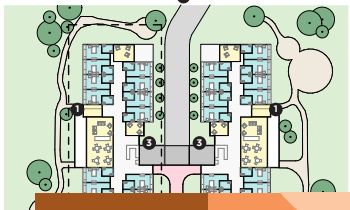


Fig 5.3.E Concept plan of household layout

Example of a small house model comprised of 4 households with 8 residents in each, grouped around a common service spine.

- 1 Verandah
- 2 Service driveway to common service core
- 3 Front entry door
- 4 Pedestrian access to front door entrances
- 5 Central courtyard

Small Households

Fig 5.3.F Concept plan of household groups and common service spine

SENIORS HOUSING DESIGN GUIDE

CHAPTER 06 Design principles Independent living units

In response to the Royal Commission, the Australian Government is investing to support senior Australians who choose to remain in their home which will need the provision of appropriate housing for this to happen.

6.5 | DESIGN FOR INDEPENDENT LIVING UNITS

An independent living unit development is not just an apartment building or a group of units, but is equally about building a community.

Residents who choose to buy and move into a retirement living development are seeking companionship and to be a part of a community who have similar interests and needs and who can support one another.

Socialisation and participation in events in communal areas outside of individual apartments is a significant aspect of life in an ILU community.

Fig 6.5.A Residents socialising in communal area.



OBJECTIVE

6.5.1 To provide housing to accommodate older people who may be active and independent and who may also be frail and needing 'at home' care services.

6.5.2 To create environments where owner/occupants of the units can get together for activities, socialising, events and celebrations.

6.5.3 To provide a place of safety, wellbeing, and connection.

SENIORS HOUSING DESIGN GUIDE

2022

77

Responsible environmental design underpins all of our work, not only for reducing the demand on natural resources but to promote health and wellbeing while maintaining positive connectivity with the outside world.

We design with the environment.

Calderflower upholds a genuine commitment to sustainability.

We deliver high performing buildings designed for longevity, thermal comfort and natural and passive ventilation.

We are motivated to source building and cladding materials that are locally manufactured, able to be recycled and have a low environmental impact.

Preserving trees, shade canopies and existing high-quality vegetation is a priority when planning new developments on all sites



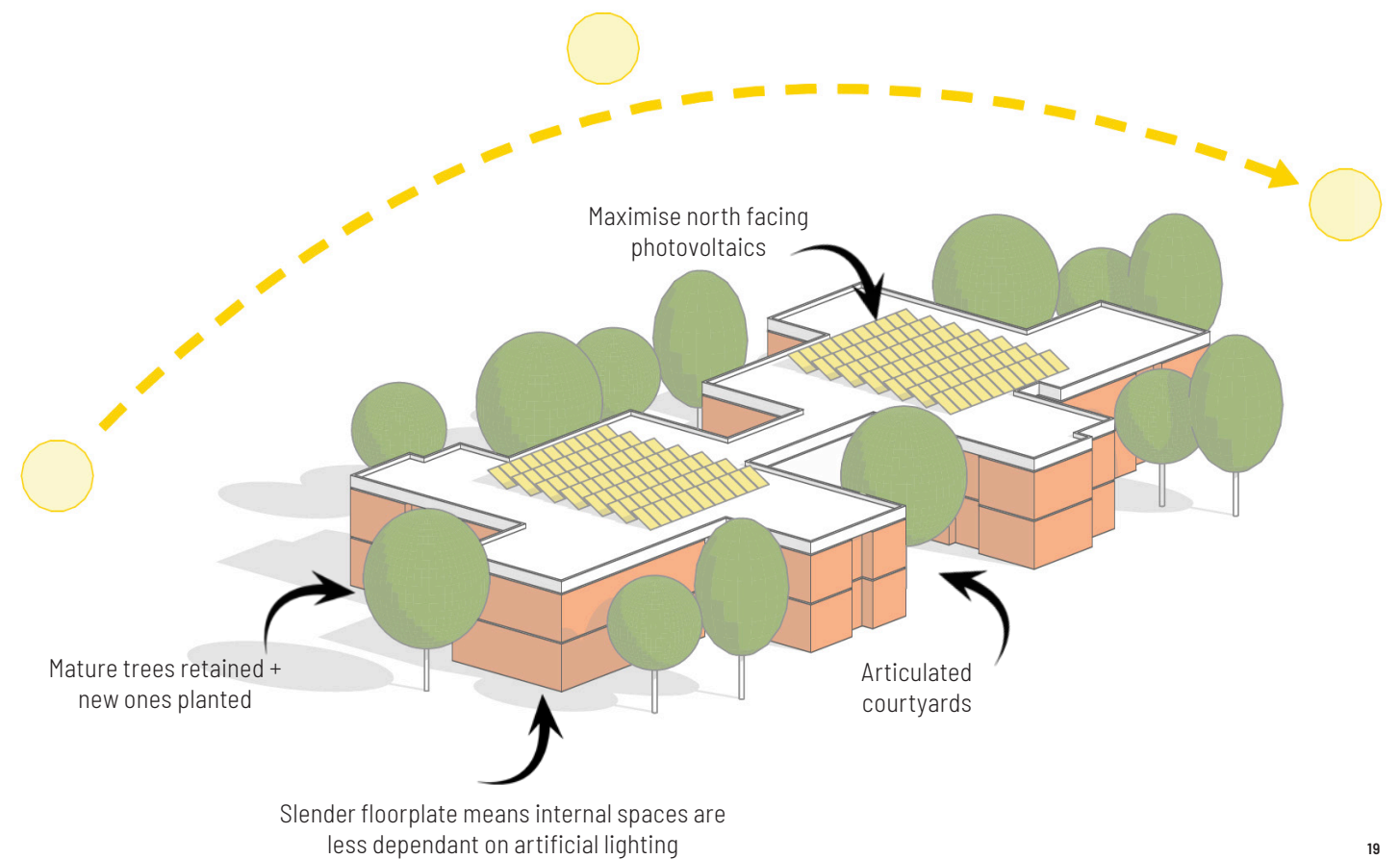
SCC (NSW and ACT) North Turramurra with photovoltaic roof panels, stormwater catchment pond and in-ground rain water tanks.





Access to daylight is essential in large scale care accommodation buildings.

Orient buildings to maximise access to northern sun, for resident amenity as well as to capture solar energy.



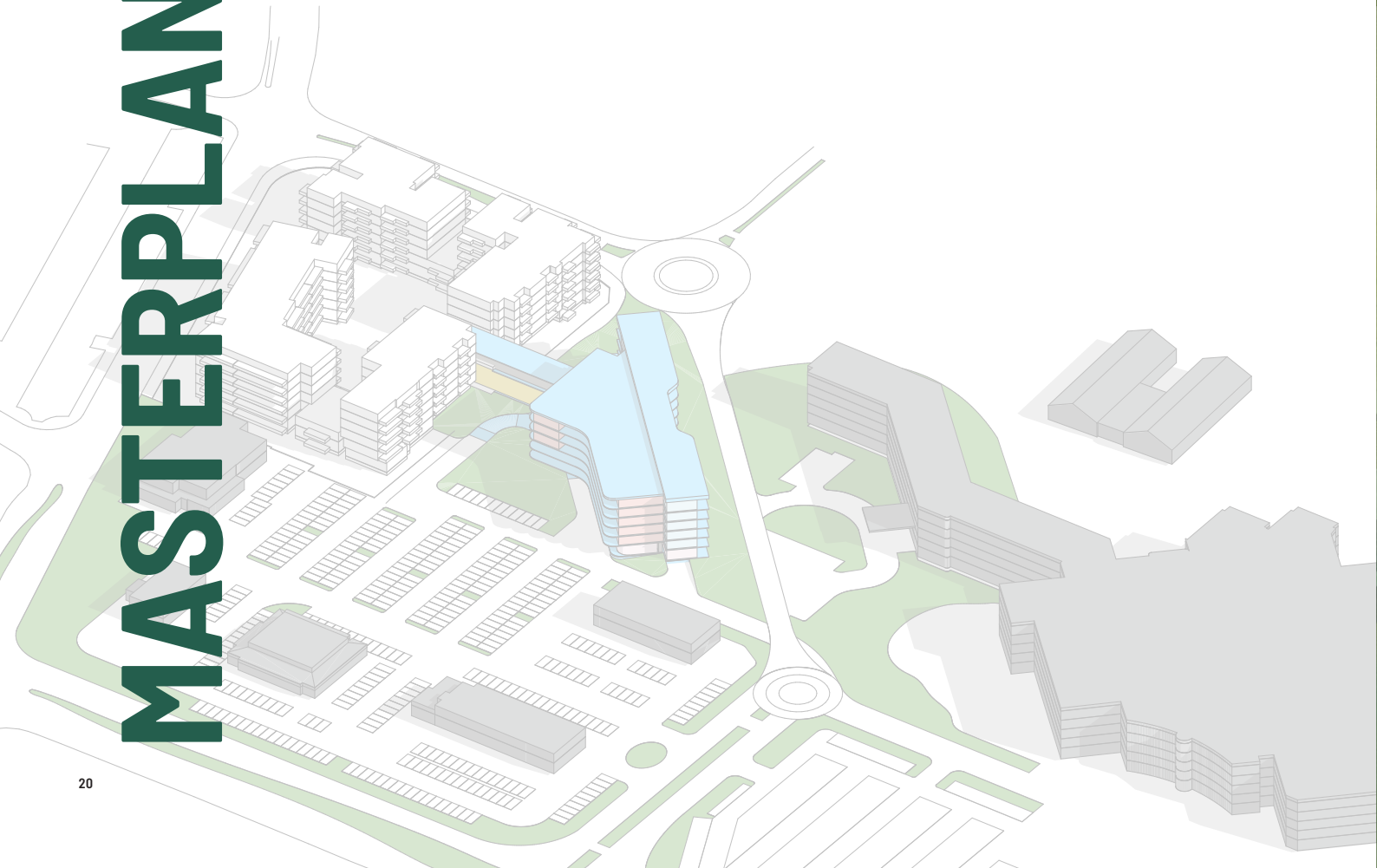
Masterplans are comprehensive documents that study in depth the potential of a site and establish a set of guiding principles for the development of that site. Masterplans expand considerably on a site yield analysis and may test multiple potential outcomes prior to establishing major guiding principles.

Calderflower offers two analytic tools, these are Site Yield Analyses and Masterplans. These tools differ only in their magnitude and comprehensiveness.

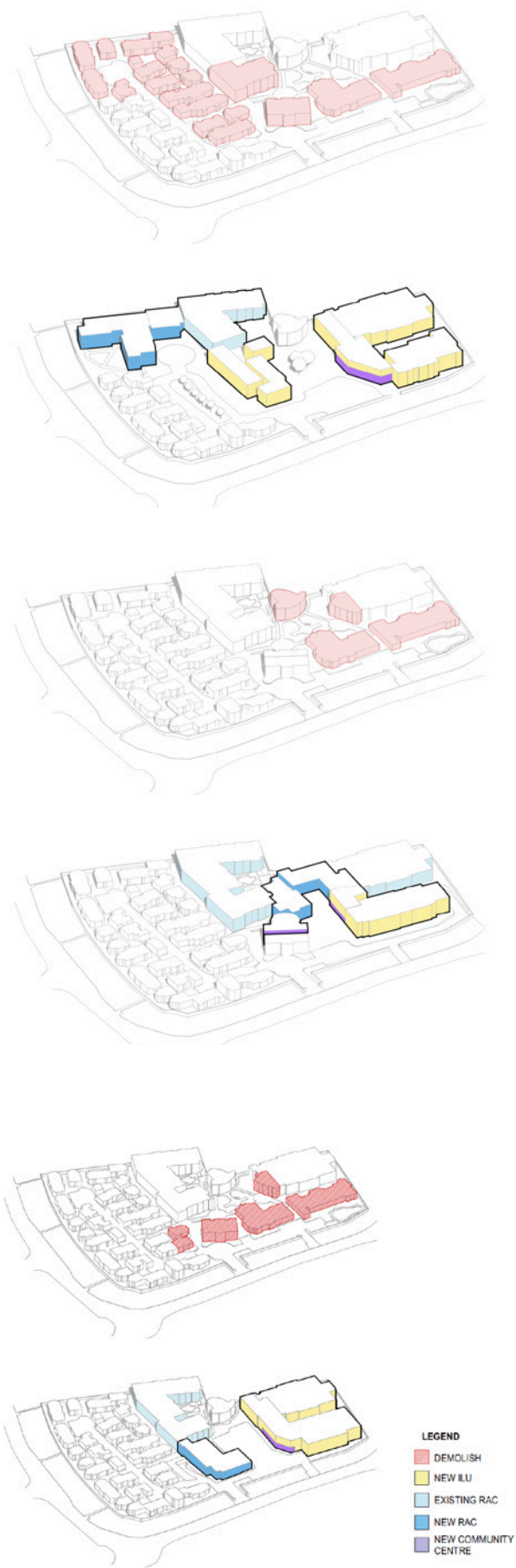
For both processes input from other consultants may vary in number from one to over twenty. The large number of necessary consultants would be a direct response to the complexity of factors influencing the site and includes considerations of a political nature.

Calderflower employs geographic information overlaid with 3D modeling to describe the outcome and Masterplans are augmented by detailed consultant's reports that indicate how the conclusions were established.

MASTERPLANNING



All sites demand respect for a multitude of factors that influence how they may be developed. These include environmental, servicing, contextual, legislative and geographic considerations, amongst others.



LEGEND
DEMOLISH
NEW ILU
EXISTING RAC
NEW RAC
NEW COMMUNITY CENTRE



Architecture

Our buildings are rigorously designed with a strong reference to place and time, creating a responsive design with authenticity, sustainability and integrity.

Adoption of technology in the design process, construction methods and within the built fabric itself is an important framework within which we work. In particular, modelling in a three-dimensional digital environment with the full consultant team is core to our workflow. It allows increased flexibility, accuracy, analysis and speed in the communication of complex building spaces.



“The breadth of Calderflower’s collective experience in the care sector, combined with their innovative mindset, has allowed [us] to create buildings that are ideally suited to facilitate our resident focused care model.”

Greg Zieschang | Director of Property Development, Opal Aged Care
September 2020



Interior Design

Calderflower Interior team is comprised of experienced senior Interior designers with extensive industry knowledge and talented designers who have a passion and commitment to bringing quality design to this sector.

Through the process we use stakeholder workshops to gain the understanding of our clients’ needs and experiences. The intended design solution is the result of empathy for the end users and a human-centred design process. We aim for a holistic design solution tailored to specify to meet clients needs and exceed their expectations. that brings qualities of design and personality, of light and vibrancy.



Anglicare Oran
Park Concept



“Calderflower consistently go above and beyond to meet our building and operational needs.”

Maurice Tullich | Managing Director,
Tullich Group



Harbison, Burradoo

The Calderflower team believe in creating environments that enable enriching ageing by:

- > Continuously improving
- > Connecting to nature
- > Encouraging imagination
- > Creating modern, joyful spaces for living

TEAM



B Arch | 1994
NSW Board of Architects
(reg. 6955)

Lara Calder Managing Director

Lara Calder joined the practice in 2010 as a Director of Calderflower Architects. With a focus on innovative and sustainable architecture, Lara champions her team to challenge the conventions of accommodation care, seniors living and community design.

Lara is passionate about delivering and positively influencing the future needs for the care and accommodation of the elderly and fostering their social relationships within our communities. She designs refreshingly alternative buildings with a strong consideration for the environment

and the unique place of each project.

Coming from a professional background in healthcare, Lara brings first-hand experience in the field and uses her experience and deep understanding of the needs of the elderly to design successful projects. She also participates in research projects and sits on various committees relating to seniors and alternative housing design. She has presented her own research and ideas at conferences throughout Australia and the world.

Associates Team



B Arch (RSA) | 1992
NSW Board of Architects
(reg. 10514)

Bradley Wahl Associate

Obtaining his Bachelor of Architecture at the University of Witwatersrand, Johannesburg, Bradley relocated to Australia in 1999 and joined Calderflower in 2017 after a successful career in residential and commercial architecture. He has over 25 years of architectural experience. He has more than 24 years of architectural experience across a diverse range of small to large scale projects both in Australia and overseas.

He is highly experienced at delivering large complex building projects, utilizing his

construction knowledge along with his skills in detailed design.

Bradley has strong people management skills, allowing him to develop valuable relationships with clients, consultants, builders and other industry stakeholders. He possesses all-round architectural skills enabling him to run projects from the conceptual stage through to building completion and has a keen interest in and understanding of sustainable architecture as well as prefabricated and off-site construction techniques.



B Arch (1st Class Hons) (Well)
B Sc (Arch) (Well)
Member of Australian Institute of Architects (reg. 7704)

Martin McCarthy Associate

Graduating from the University of Victoria, Wellington, New Zealand, Martin has spent more than 32 years working as an Architect in New Zealand, Australia and Japan. He holds a Bachelor Degree in Building Science and first class Honors Degree in Architecture.

His diverse career has seen him working on a variety of building types and spaces and exploring how a building responds to its context is his passion. He's spent the past

nine years focused specifically on architecture for aged care and has worked alongside Lara Calder since 2006.

Martin's weekday commute takes him past some of his favourite Sydney structures and sources of inspiration, the Sydney Harbour Bridge and International House in Barangaroo, Sydney. When he's not in the office, Martin is a keen cyclist and enjoys taking in Sydney's unique style from his bike.

Associates Team



B Design (Arch) (USYD) | 2005
M Arch (USYD) | 2008
NSW Board of Architects
(reg. 9720)

Polly Jankov
Associate

Since joining the Calderflower team, Polly has developed a strong understanding of aged care design through practical experience. She completed both her Bachelor’s Degree and Masters in Architecture at the University of Sydney and has spent her professional career prior to joining Calderflower in high-end residential, heritage architecture and sustainable research in Central Asia.

Polly has become a valued member of the Calderflower team with the ability to take

projects from early feasibility seamlessly through to documentation and completion. She is inspired by the design of adaptable and flexible spaces that engage the senses and help prolong the life cycle of a building and believes in the importance of the connection to the outside world and end user.

Outside of work, Polly is an avid traveller and enjoys drawing inspiration from the architecture and cultures of the places she visits around the world.



B Arch (Hons) (UNSW) | 1998

Paul Myers
Associate

Paul has spent much of his career with the Calderflower team and was made Associate in 2008. He has an in-depth knowledge and varied experience in many aged care projects, including nursing homes, residential care facilities as well as retirement villages and multi-unit developments. His work has seen him develop a considerable depth of experience in project design and documentation, coordinating consultants, tenders and project administration.

Paul has a deep knowledge of the statutory regulations and requirements and builds excellent working relationships with clients, consultants and builders. His practical and thorough approach to his work is highly valued by our clients and team members and he is known for maintaining rigorous contract documentation standards and co-ordination of consultants’ information. Paul’s extensive architectural expertise also extends to Contract Administration and Quality Insurance.

Interiors Team



B Des (Hons II)
University of SA | 1993

Matthew Reid
Senior Interior Designer

Matthew has worked in the Interior Design industry for more than 24 years and worked on a diverse range of projects both locally and internationally during his career. Over the years he has been involved in high end residential, retail and multi residential, commercial and hospitality projects and brings an incredible depth of knowledge to the Calderflower team.

Matthew is passionate about shaping interiors that enrich people’s life and pays particular attention to every detail from the initial project brief through the many project stages. He applies his passion for residential design to the interior design of the aged care sector with Calderflower and is focused on enhancing the spatial and aesthetic experiences of the end user of each project.



B Des Interior & Spatial
(UTS) | 2014
B Arts International
Studies (UTS) | 2014

Eva Affolter
Interior Designer

After completion of her studies in Interior and Spatial Design with International Studies at UTS Eva moved to Europe, working in Switzerland on various residential, commercial and retail projects. She is passionate about accessibility and sustainability.

Eva previously worked as a disability support worker, giving her a unique insight into how spaces are used by people with differing abilities and how good design can benefit someone’s quality of life.

Graduate Team



B Arch (UTS) | 2018
M Arch (UTS) | 2020

Perry Cheang
Graduate Architect

Completing both his Bachelor’s and Master’s degree at the University of Technology Sydney, Perry has found his passion in model making and developed strong skills in concept design and architectural presentation.

He also enjoys travelling to architectural landmarks in other countries and gaining global architectural knowledge and insights as he did in part

of his university studies in Japan and Johannesburg.

Perry has worked on multiple projects including small-scale commercial and residential projects in Sydney with the goal of improving functionality and aesthetics. Through passion and experience, Perry brings his skills and expertise to the table and is a valuable team member.

Admin Team



Diploma in Graphic Design (CATC) | 2019
Cert III in Style Visualisation (WID) | 2015

Emma McDonnell
Office Manager

Emma has previously worked in Architecture in a support role, she has always had an interest in all areas of design.

She integrates the practice’s designs, building performance and office workflows, always

striving to improve on our previous performance, and push in our adoption of technology where appropriate.

Emma is part of out marketing team and also has strong graphic design skills.



In addition to care accommodation and retirement projects, our broader portfolio includes projects for community centres, single residences, disability housing and medium density apartment developments.

PROJECTS



McKillop House, Baulkham Hills

Residential Care

Architecture

Client
Catholic Healthcare

Status
Complete 2021

A new Residential Care home in Baulkham Hills for Catholic Healthcare, includes a dementia specific component. The building has been configured to respond to the sloping terrain and the residential context of the site and local neighbourhood. The greater masterplan that the property sits within has been instructive in guiding the building form and scale. This development is a successful urban design example for integrating with the local context and breaking down the building scale with smaller articulated scale roof elements.

Opal, Glenmore Park

Residential Care

Architecture + Interiors

Client
Opal HealthCare

Status
Complete 2022

Calderflower have designed an efficient care home that exceeds the required room yield within complex site parameters and a protracted negotiation process with the council and planning panels.

The building form responds to the sloping site by stepping down the slope to reduce bulk and scale. It also incorporates large setbacks to neighbouring properties and uses articulated forms and a varied palette of building materials to describe the building character. The parking has been located on-grade to reduce the cost of excavation and is located to minimize impact on the neighbouring properties.





Harbison Care, Burradoo

Dementia Care Residential

Architecture + Interiors

Client

HarbisonCare

Status

Complete 2019

Two dementia households for HarbisonCare in Burradoo, NSW Southern Highlands. Each household has 15 private rooms, with a central living hub established around a generous kitchen and hearth fireplace. The architecture and interiors reference the aesthetic of the Southern Highlands to present as a 'country house'. The households are connected through sympathetic landscaping with a central courtyard and covered walkway.



Harbison Care, Burradoo

Dementia Care Residential

Architecture + Interiors

Client

HarbisonCare

Status

Complete 2020

Based on the 'Butterfly' model of dementia care, Harbison Dementia Living provides a home-like experience to support the independence and comfort of people living with dementia. The interiors are designed to support the therapeutic benefits of involving residents as much as possible in normal daily activities, such as cooking and doing laundry.

A communal dining room is designed to encourage social interaction, and the central lounge and activities space feature special tactile dementia friendly furniture. To assist residents in identifying their bedroom, every door is unique, and each room incorporates plenty of space to display personal items.

The Royce, Penrith

Residential Care and Independent Living Units

Architecture + Interiors

Client

Tulich

Status

Complete 2020

The Royce sets an exceptional standard for co-located Retirement Living and Care accommodation in Penrith. It represents a new model for urban living for our passionate client, bringing a fresh approach to ageing in place. The brief was to create interiors suitable for a 5-star facility, with an entrance that feels like a modern hotel with the comfort of home. Careful selection of finishes and fabrics helped to achieve the desired mix of sophistication and playfulness the project required.



The Royce, Penrith

Residential Care and Independent Living Units

Architecture + Interiors

Client

Tulich

Status

Complete 2020

The Royce is a new product for premium retirement living co-located with High Care accommodation for Tulich Communities. This project includes a luxurious offering of 137 apartments, a 128 bed care facility, courtyard gardens, roof terraces and extensive front of house services. The close adjacency to Penrith Panthers Club will support the club community.





Opal, Toongabbie

Residential Care

Architecture + Interiors

Client
Opal HealthCare

Status
Complete 2022

Toongabbie Terrace by Opal Healthcare is a care home offering a high quality finish both inside and out. The building compliments the urban setting and the adjacency to the Toongabbie Bowling Club.



Fresh Hope Care, Maitland

Residential Care and Respite Facilities

Architecture + Interiors

Client
Fresh Hope Care

Status
Construction

This new care home will embody a combination of all the principles of small households, biophilic environmental design, Covid-informed infection control, operational efficiency and general delight in the design language and concept.

The building will demonstrate how a 166 bed home can be modulated into a small footprint with intimate spaces and a human scale. Due for completion mid 2023.



Southern Cross Care, North Turramurra

Residential Care and Heritage renewal

Architecture

Client
Southern Cross Care (NSW and ACT)

Status
Complete 2019

This 113 bed Residential Care home is a complete redevelopment of an existing nursing home and includes refurbishment of a heritage house and chapel in North Turramurra, NSW. The project included extreme bushfire constraints, mature tree preservation and complex heritage components.

The successful outcome is a contemporary building that compliments the landscape setting and adjacent heritage architecture.



Barry Marsh House, Oran Park

Residential Care

Architecture + Interiors

Client

Anglicare

Status

Complete 2020

The interior design takes inspiration from both the local flora and fauna and the motor racing heritage of the Oran Park site.

A contemporary interior colour theme based on a combination of salmon and sage, provides the backdrop to bright modern artwork and inspiring fabric selection, including fabrics designed by Jimmy Pike. Artwork in the Kingfisher Café, located in the entrance lobby, includes a storyboard and vintage race car photographs telling the story of the operation of Oran Park Raceway from 1962 through to 2010.

Wayfinding is clear, consistent and creates a differentiated identity to each resident neighbourhood that have been named after local native birds, namely Currawong, Corella, Lorikeet, Rosella and Wattlebird.

Barry Marsh House, Oran Park

Residential Care

Architecture + Interiors

Client

Anglicare

Status

Complete 2020

After intensive client consultation and workshops, this 80 bed Residential Care home provides co-located care to the Oran Park Retirement Village for Anglicare.

"The project was a success. A successful project is one that requires no operational changes after end user acceptance. We haven't had to change a thing."
Peter Paltoo Executive General Property Manager Anglicare.

Abundant natural daylight with internal lightwells are the key feature in the care wings, allowing residents and staff to experience the movement of the sun throughout the day and re-defines the conventional corridor spaces as places of interest and engagement.





Opal, Meadowbank Grove

Residential Care

Architecture

Client

Opal HealthCare

Status

Complete 2020

This 135 bed Residential Care Home was built after a very challenging approval process but the outcome is beautiful and well integrated into the suburban context.



Uniting Annesley, Haberfield

Psychogeriatric Residential Care

Architecture + Interiors

Client

Uniting

Status

Complete 2017

The refurbishment of Uniting Annesley involved transforming a motel style building into a home for older people living with a mental illness.

The challenge of this refurbishment was in making the existing building fit within the client's design guide and care model. With the focus on mental health, the heritage component of the building was renovated to maintain character, whereas the motel component of the site was enhanced with modern features representing a different era and personality.

The overall result of this project is one of renewal, delight, colour and warmth. Once a bleak and dated environment, Uniting Annesley has been given a new lease of life to both the existing older buildings as well as for the residents who proudly live there.



Lark Ellen, Jannali

Residential Care

Architecture + Interiors

Client

Apex Aged Care

Status

Tender Documentation

The heritage listed building has been operating as a private family-owned nursing home for many years. The acquisition of several neighbouring properties presented the opportunity to develop a new contemporary facility built to accommodate modern care standards.

The completed development and total refurbishment of the heritage home will see the co-location of old and new buildings, separated by glazed linking corridors and new front entrance. The completed building will offer 131 beds with finely detailed interiors by Calderflower Interiors.



LAC Arrunga, Albury

Residential Care

Architecture + Interiors

Client

Lutheran Aged Care

Status

Construction

This staged project is a major redevelopment of an existing older styled single storey nursing home, with the addition of a new front entry introducing a new building character and unique identity. The new chapel, admin and community centre form the community hub and village square precinct and will include a new cafe, allied health and wellness services. Future childcare has been planned to extend the facility into the wider, all age community.





CASS Group House

Disability Housing

Architecture + Interiors

Client

CASS

Status

Complete 2022



Calderflower work hard on the amenity and architectural character of disability housing for the NDIS. This new Group Home in South western Sydney is filled with daylight from clerestory windows and is simply planned around a central north facing courtyard that the kitchen and livings space open out onto. The interiors are warm, textural and home like.



Dudley Foord House, The Ponds

Residential Care

Architecture

Client

Anglicare Community Services

Status

Complete 2017

Residential care for Anglicare at The Ponds, NSW opened in 2017. Dudley Foord House comprises of 102 beds in 8 wings specifically tailored to the needs of the various levels of care required by residents.

The building also includes a large commercial kitchen, café, hairdressing salon, chapel and wellness areas; as well as extensive external courtyards, golf putting green, sustainable community garden space and break-out areas.





Southern Cross Care, Thornton Park

Residential Care
Independent living units
+ community component

Architecture

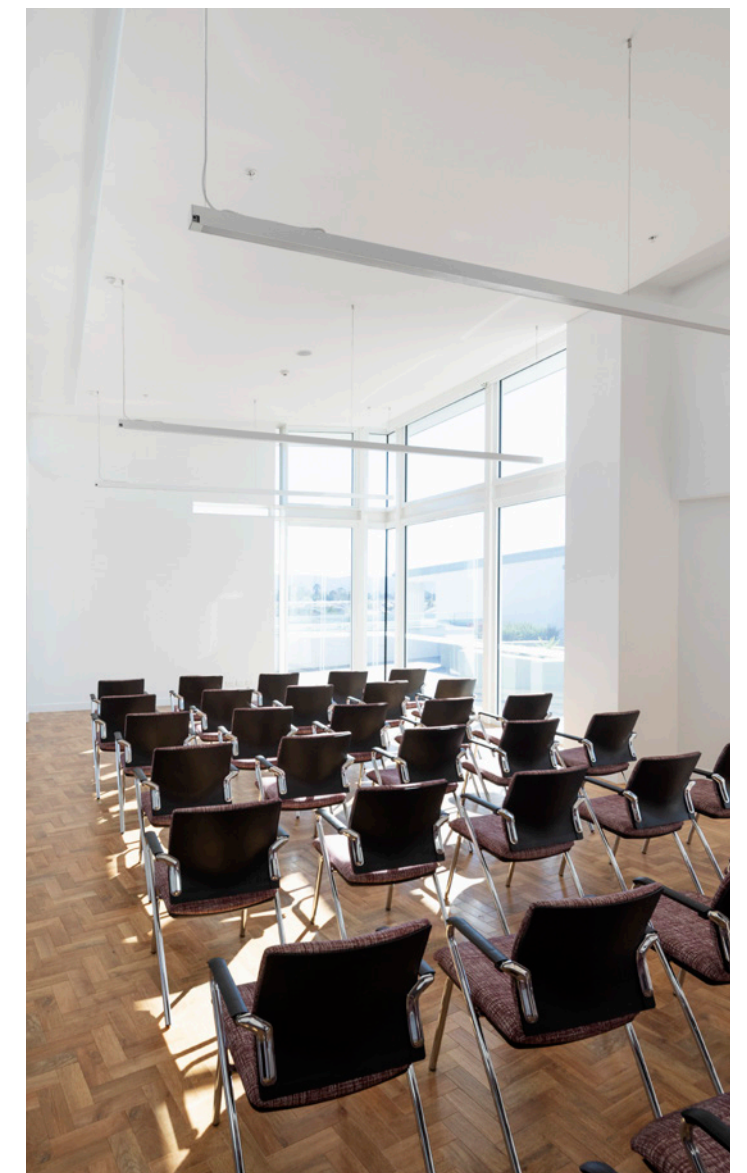
Client

Southern Cross Care (NSW and ACT)

Status

Complete 2018

This co-located development for Southern Cross Care (NSW and ACT) includes a 100 bed Residential Care and 48 Independent Living Units with basement car parking, and a large community centre. The successful project is part of the Urban Growth Thornton Masterplan in Penrith and the long street frontage provides excellent exposure to the greater Thornton precinct.



Allity, Pemulwuy

Residential Care

Architecture

Client
Allity Aged Care

Status
Complete 2017

A 130 bed Care Home designed and documented by Calderflower Architecture for Allity Aged Care was completed in mid 2017.

The key vision for this project was to design a superior product that embodied the Allity brand and its market position. A Hamptons inspired home was part of the original brief.



CASS, Asquith

Residential Care and
Independent Living units

Architecture + Interiors

Client
Chinese Australian Services Society (CASS)

Status
Due for completion Mid 2023

A 98 bed residential care home is designed alongside a separate building for 13 new Independent Units for co-located care. A full basement and back of house component will extend services to both buildings and the community hall and ILU resident meeting space.

Articulated facades and warm materials describe a contemporary building, designed to appear as a non-institutional and welcoming building. The long narrow site overlooks a cricket oval and will offer residents an expansive leafy outlook and northern aspect.





Gosling Creek Aged Care, Orange

Residential Care

Architecture + Interiors

Client
Allity Aged Care

Status
Complete 2014



Gosling Creek Aged Care is a homestead style building designed to feel more like a boutique country hotel, rather than an aged care home. The single level building offers residents a premium level of comfort and amenity, while enjoying the beautiful rural setting of the Orange countryside.

The entrance of the building opens up into a large central area or 'town centre' immediately offering a warm and friendly area to mingle and meet with visiting family and friends. This is also the focus of many activities such as a visit to the cinema room, hairdresser or coffee shop.

From the town centre, the building is configured around a series of interconnected wings, which extend into smaller, private living areas off the adjacent wings and various landscaped courtyards.



Calderflower Architecture are proud to have been a part of the project to design a new hospital in Asuoso, Ghana. We are committed to promoting sustainable building design and making quality architecture accessible, to better the lives of people who would benefit from it the most.



The expansion of St Theresa Clinic to a hospital was initiated by Dutch nurse Marian Remmerswaal and clinic manager Lawrence Bempong.

Calderflower Architecture was engaged to design the new hospital. In August 2012 we visited Ghana to meet Marian and the project team. We studied the site and local architecture to understand the construction systems and material availability.

The existing clinic commonly saw up to 60 patients a day. It offered only basic medical services, consisting of a general eye clinic, an outpatient department with a pathology section and dispensary, and a small maternity unit.



The existing buildings were small houses adapted to suit the clinic functions, without basic services of water, mains power or sewer.

The development and construction of a new hospital was proposed to offer a wider range of services including in-patient care and attend to a larger number of people.

The daily realities of inaccessible or unavailable basic health services are an everyday shackle bound to communities in the developing countries throughout East Africa.



A comprehensive and tangible design for a natal clinic in rural East Africa required a responsive solution providing opportunities for health care and education where notions of refuge and access co-exist.

The original design motivation was strongly informed by the lack of the land's most precious resource - clean water. The concept of an expansive canopy roof was largely driven by the necessity to harvest water as an essential commodity for the operation of a clinic that provides health care to a multitude of disadvantaged communities.

The simple design solution evolved from a pragmatic layering of parts, a central communal space encased by a grid of circulatory paths from which private sections and subsidiary gathering spaces are accessed, with a canopy centred along the building's longitudinal axis.

This proposed spatial discipline, although rigid in plan, allows for automatic orientation from within and externally. The prototype can, therefore, be adapted into a more modest building or into one that sprawls with the nature of its demand.



The completion and successful opening of the new hospital in 2016 has met the much needed demand for healthcare services and is proudly supported by the local community.

Awards

Glenmore Park Care Community
UDIA NSW Awards for Excellence 2021
Winner - Retirement Living

The Royce, Penrith
UDIA NSW Awards for Excellence 2021
Winner - Retirement Living

HarbisonCare, Buradoo
UDIA NSW Awards for Excellence 2021
Winner - Aged Care

Southern Cross Care, North Turramurra
UDIA NSW Awards for Excellence 2020
Winner - Aged Care

Uniting Annesley, Haberfield
UDIA NSW Awards for Excellence 2018
Commendation - Aged Care

Dudley Foord House, The Ponds
UDIA NSW Awards for Excellence 2017
Commendation - Senior's Aged Care Living
BUPA Baulkham Hills
UDIA NSW Awards for Excellence 2015
Senior's Aged Care Living

Donington Gardens, Georges Hall
UDIA NSW Awards for Excellence 2015
Senior's Independent Living
Affordable Development
Medium-Density Housing

CASS, Campsie
UDIA NSW Awards for Excellence 2015
Winner - Senior's Aged Care Living

Gosling Creek, Orange (Allity Aged Care)
UDIA NSW Awards for Excellence 2015
Commendation - NSW Regions & ACT
Finalist - Senior's Aged Care Living

BUPA Sutherland
UDIA NSW Awards for Excellence 2014
Senior's Aged Care Living

Uniting Elanora, Shellharbour
UDIA NSW Awards for Excellence 2013
Winner - NSW Regions & ACT
LASA New Building Award 2012
Best New Aged Care Building



CALDERFLOWER

Level 2, 140 Myrtle Street
Chippendale NSW 2008
Australia

P 02 9698 9822

E email@calderflower.com.au

www.calderflower.com.au

Follow us on:



LinkedIn

www.linkedin.com/company/calder-flower-architects



Facebook

www.facebook.com/calderflowerarchitects/



Instagram

[@calderflowerarchitects](https://www.instagram.com/calderflowerarchitects)



Pinterest

www.pinterest.com/calderflower/

Southern Cross Care North Turramurra